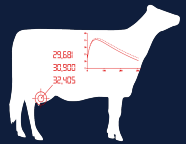


TRANSITION ANALYTICS

QCS TEST HERD #8



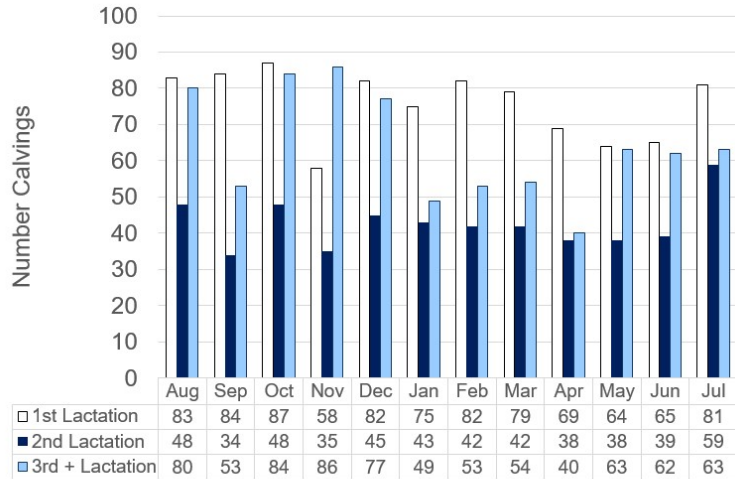
DHI Herdcode
93999941

Test Type & Description
31 DHI-AP

Sample Date
08/05/24

Process Date
08/20/24

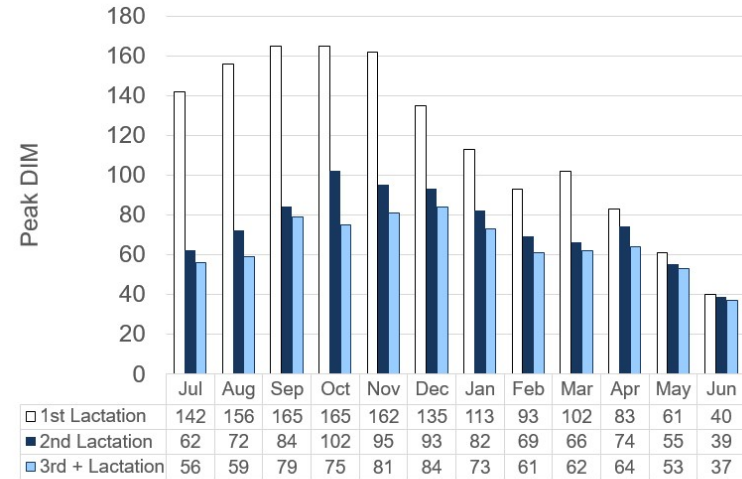
Number Cows Calving by Month



Month Fresh

□ 1st Lactation ■ 2nd Lactation ■ 3rd + Lactation

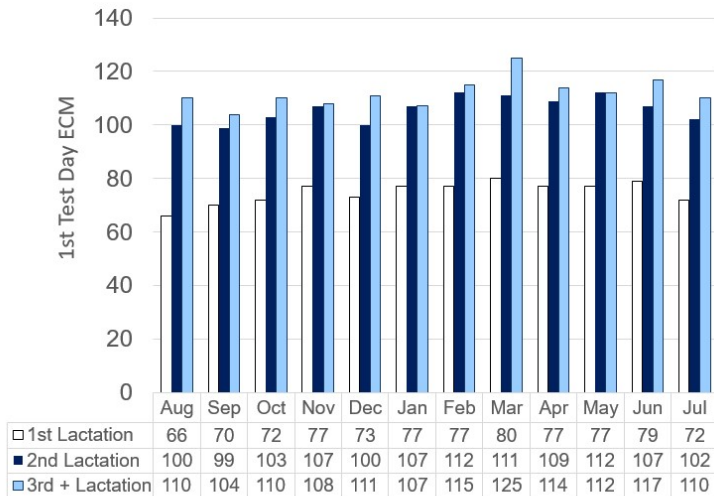
DIM at Peak Milk by Calving Month



Calving Month

□ 1st Lactation ■ 2nd Lactation ■ 3rd + Lactation

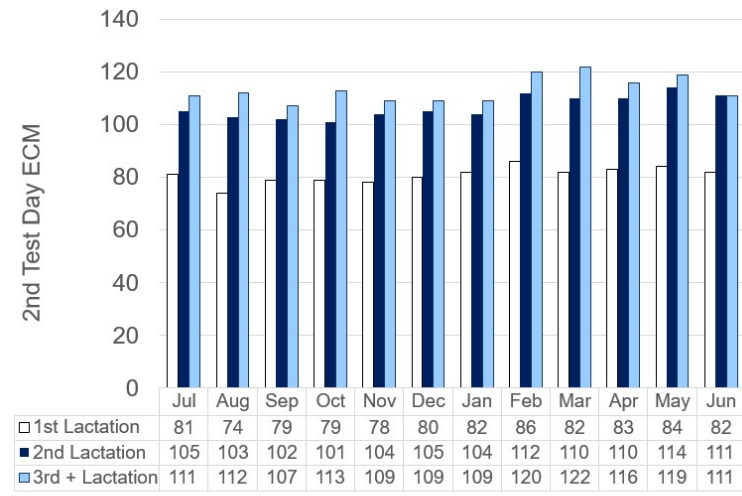
1st Test Day ECM by Calving Month



Calving Month

□ 1st Lactation ■ 2nd Lactation ■ 3rd + Lactation

2nd Test Day ECM by Calving Month

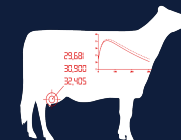


Calving Month

□ 1st Lactation ■ 2nd Lactation ■ 3rd + Lactation

TRANSITION ANALYTICS

QCS TEST HERD #8



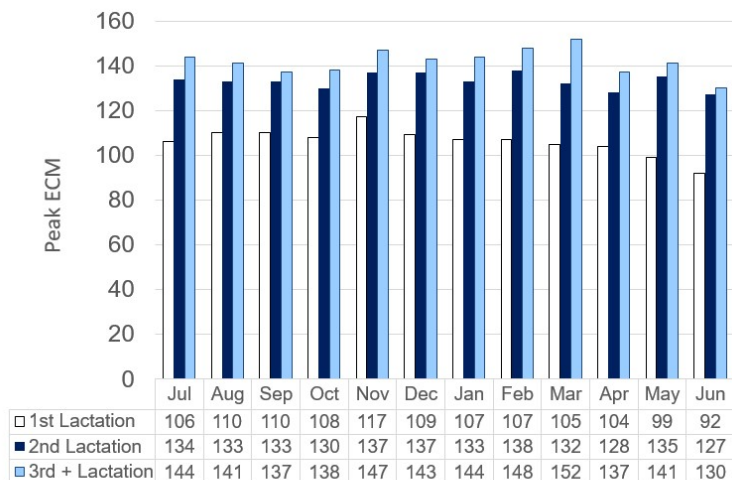
DHI Herdcode
93999941

Test Type & Description
31 DHI-AP

Sample Date
08/05/24

Process Date
08/20/24

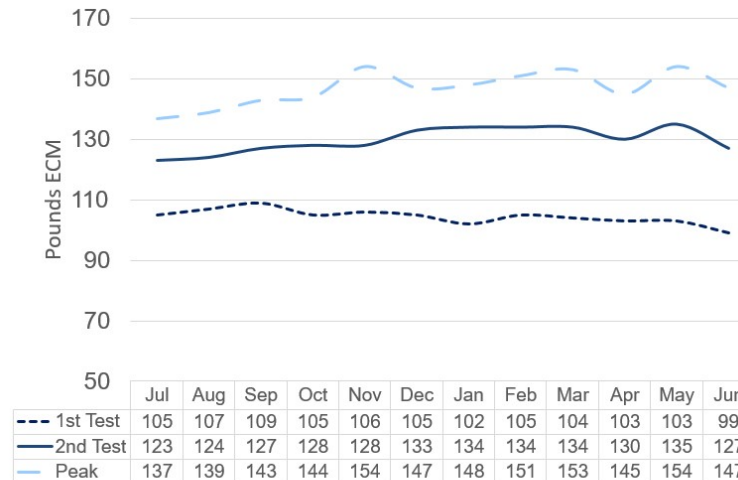
Peak ECM by Calving Month



Calving Month

□ 1st Lactation ■ 2nd Lactation ■ 3rd + Lactation

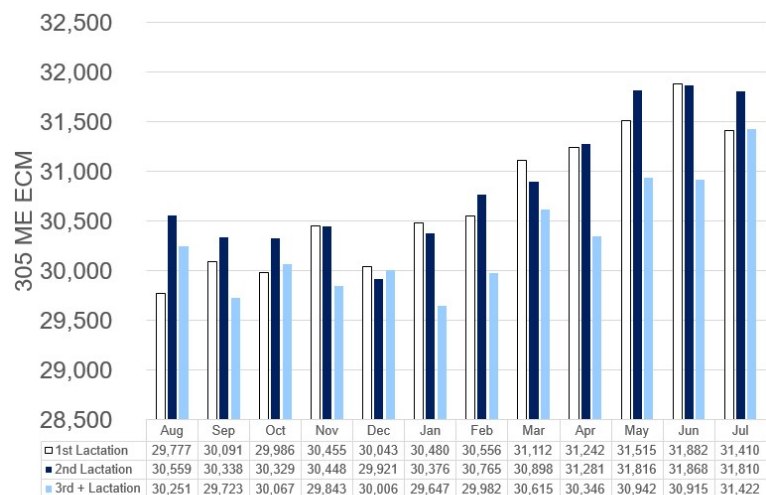
Energy Corrected Milk Trends by Calving Month



Calving Month

--- 1st Test — 2nd Test — Peak

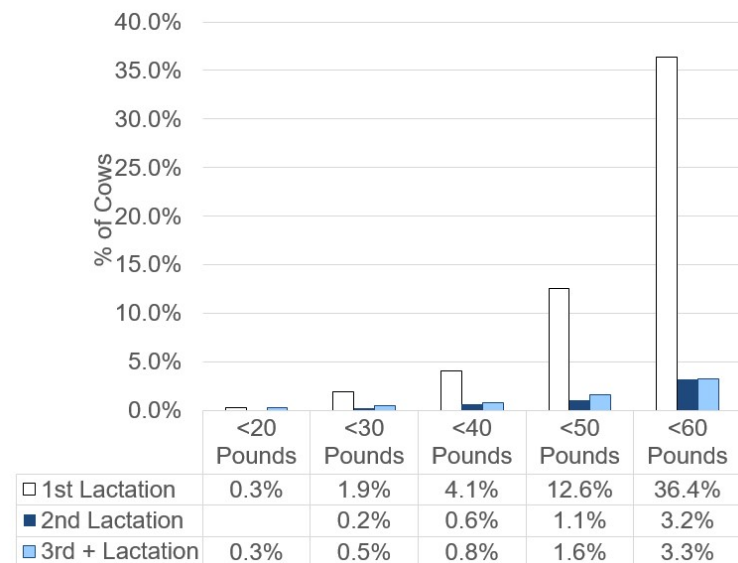
1st 305 ME ECM by Lactation Group and Calving Month



Calving Month

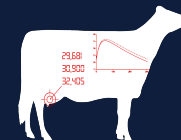
□ 1st Lactation ■ 2nd Lactation ■ 3rd + Lactation

% Cows at Most Recent Test Date with 1st Test ECM Below Thresholds



TRANSITION ANALYTICS

QCS TEST HERD #8



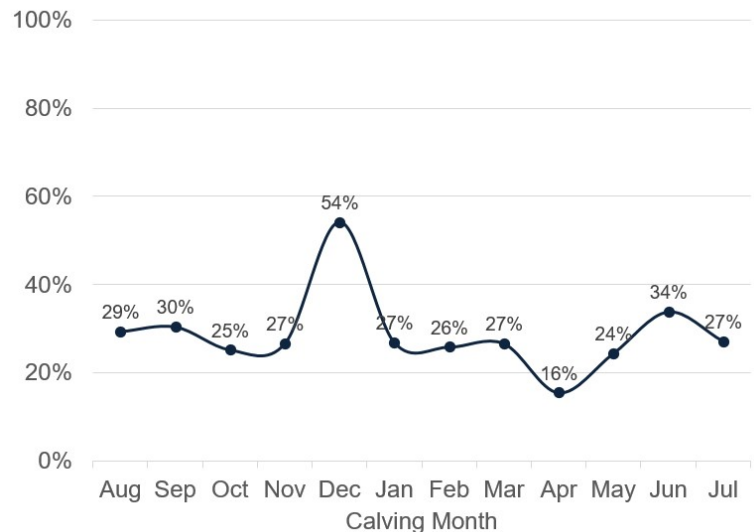
DHI Herdcode
93999941

Test Type & Description
31 DHI-AP

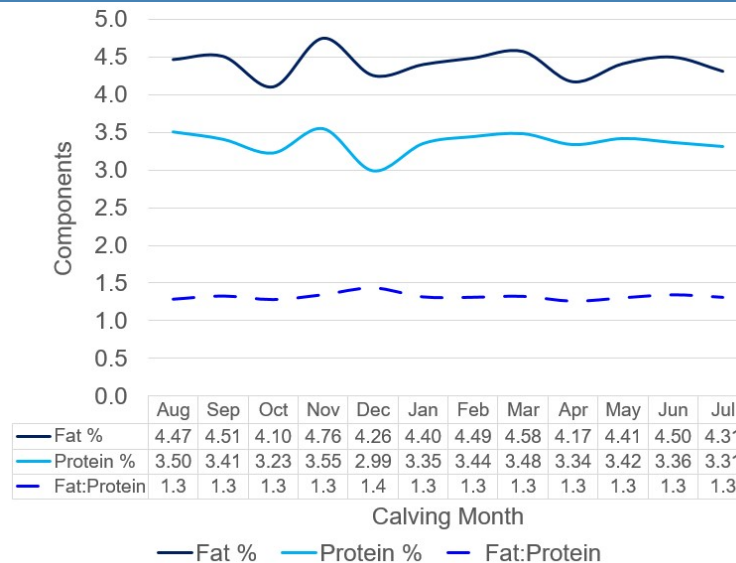
Sample Date
08/05/24

Process Date
08/20/24

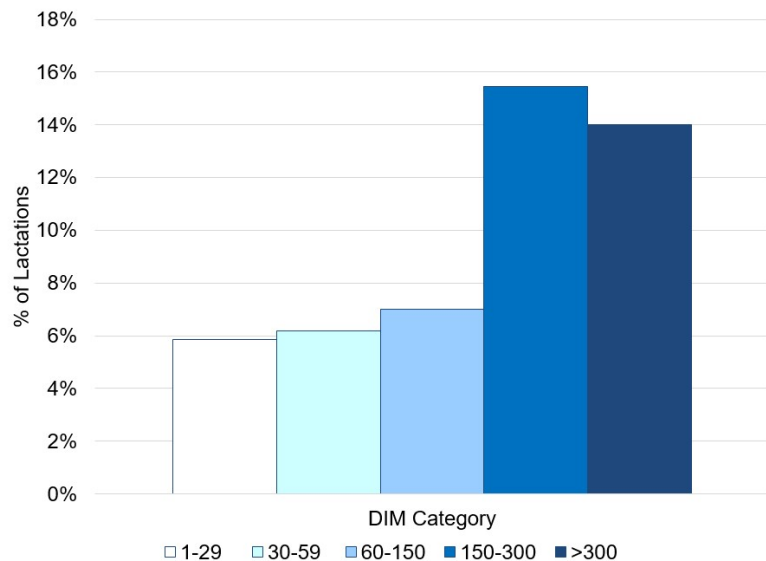
% Cows with 1st Test with Fat:Protein > 1.4 (Ketosis Risk)



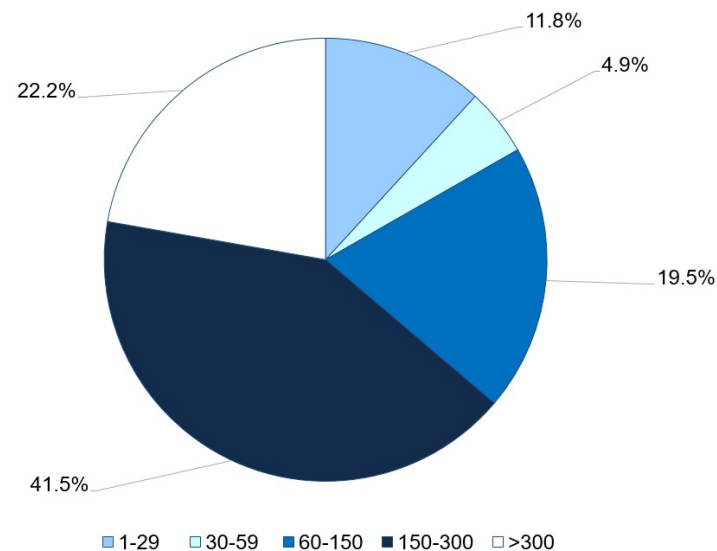
1st Test Component Trends by Calving Month



% of Lactations Culled by DIM Category

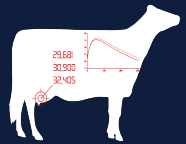


% of Culls by DIM Category



TRANSITION ANALYTICS

QCS TEST HERD #8



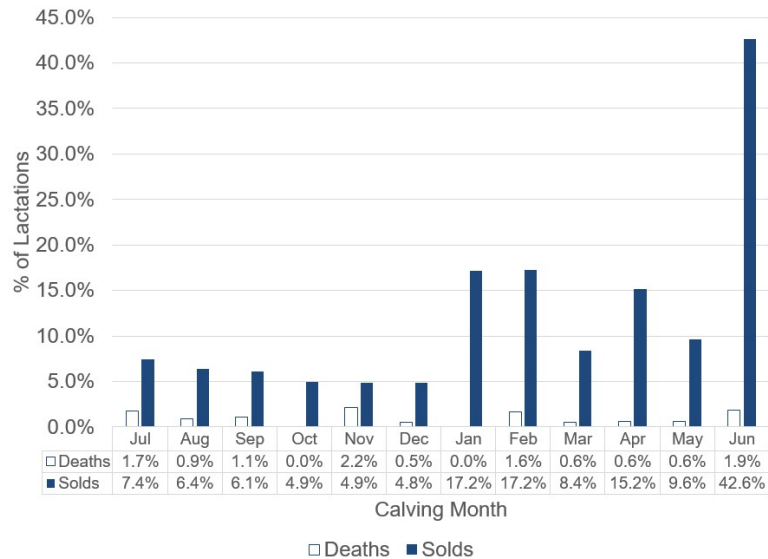
DHI Herdcode
93999941

Test Type & Description
31 DHI-AP

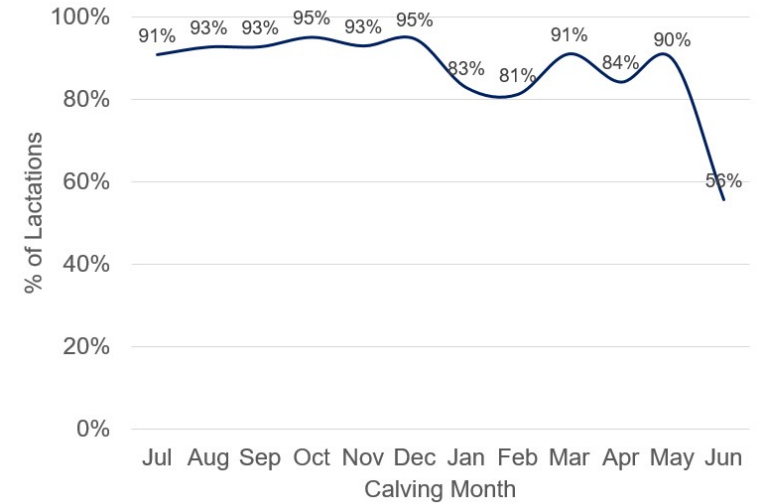
Sample Date
08/05/24

Process Date
08/20/24

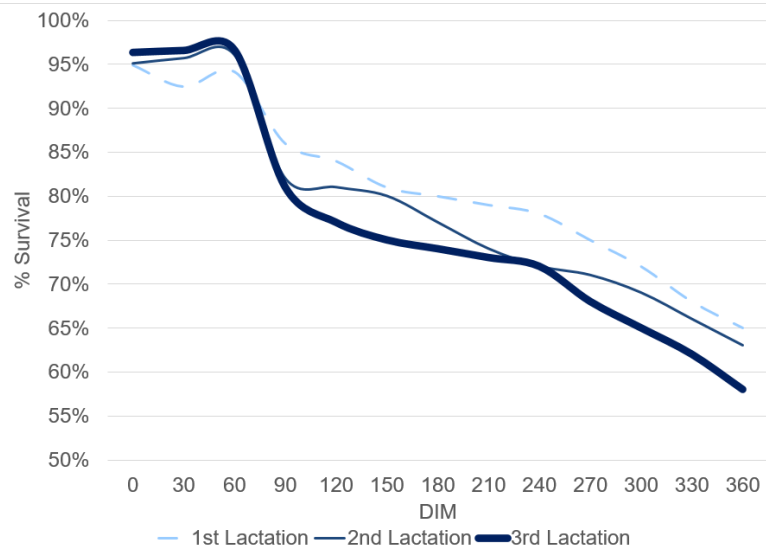
% of Lactations Ending in 1st 60 DIM by Calving Month



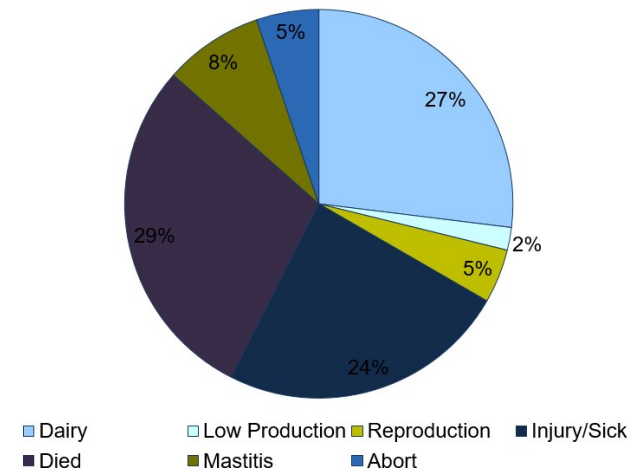
% Lactations with Survival Past 60 DIM



Survival Analysis by Lactation Group

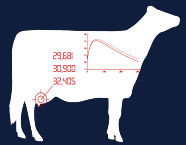


Culling Reasons for Cow Culled <60 DIM



TRANSITION ANALYTICS

QCS TEST HERD #8



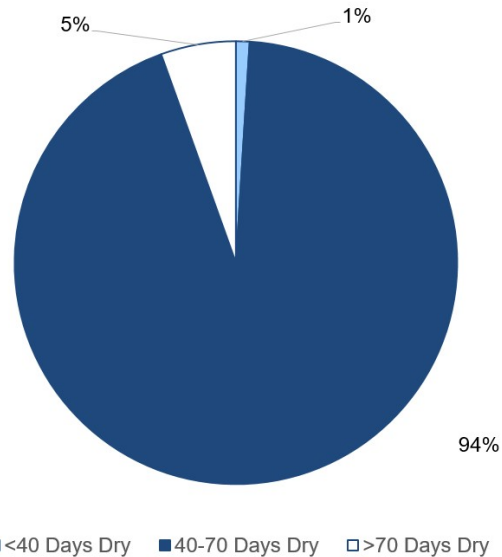
DHI Herdcode
93999941

Test Type & Description
31 DHI-AP

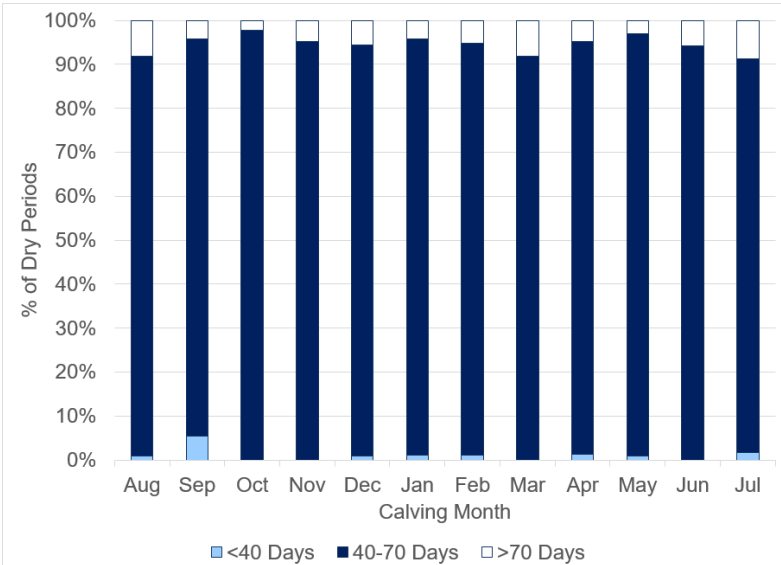
Sample Date
08/05/24

Process Date
08/20/24

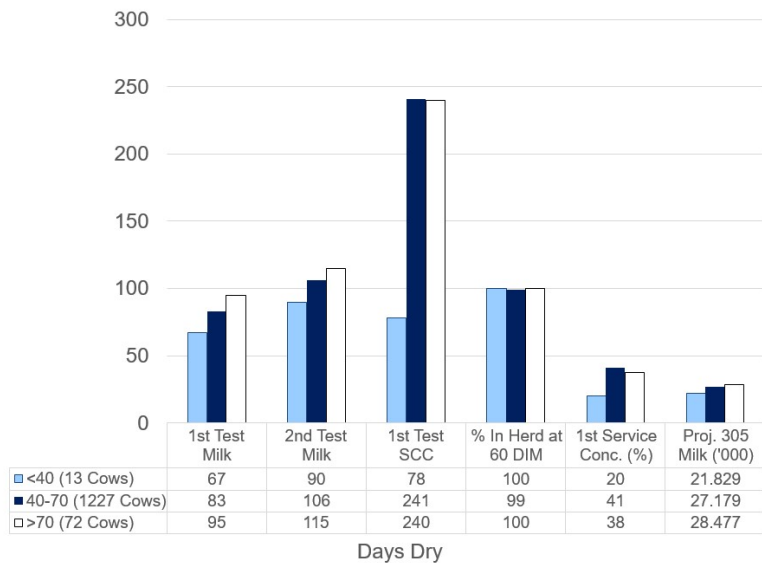
Dry Period Length Distribution



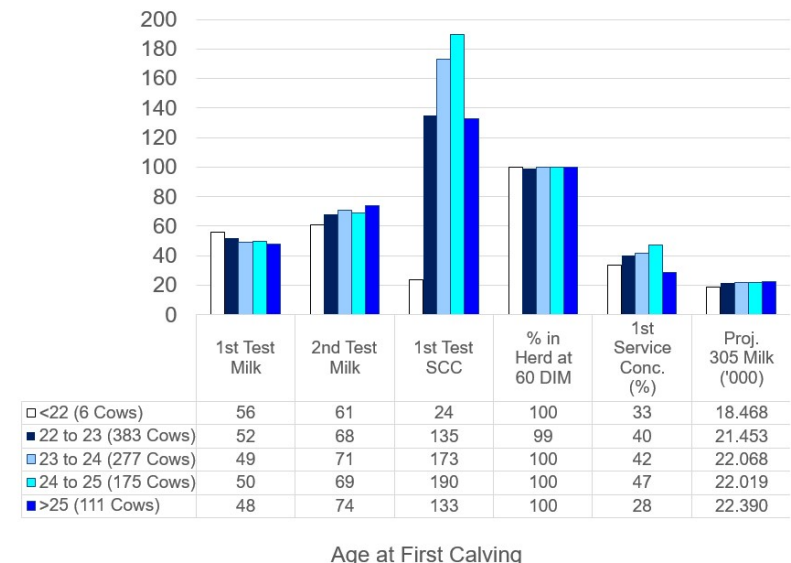
Dry Period Length Distribution by Calving Month



KPI's by Dry Period Length

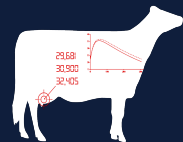


KPI's by Age at First Calving



TRANSITION ANALYTICS

QCS TEST HERD #8



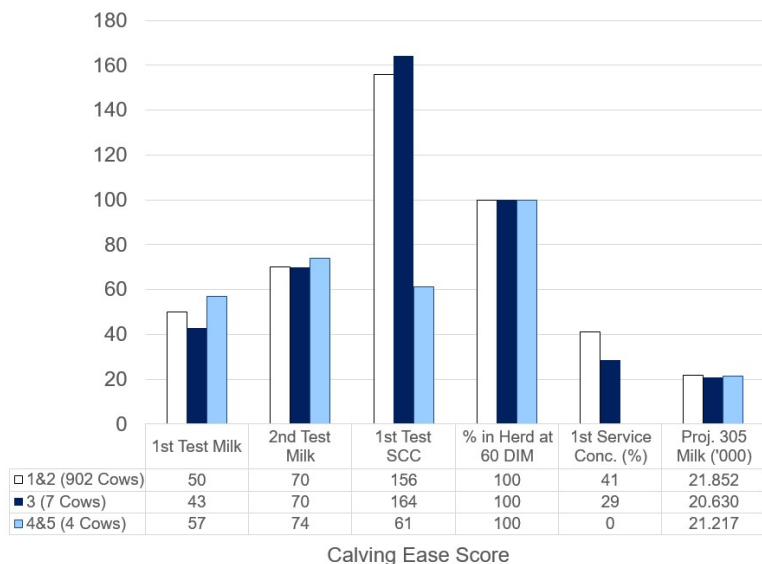
DHI Herdcode
93999941

Test Type & Description
31 DHI-AP

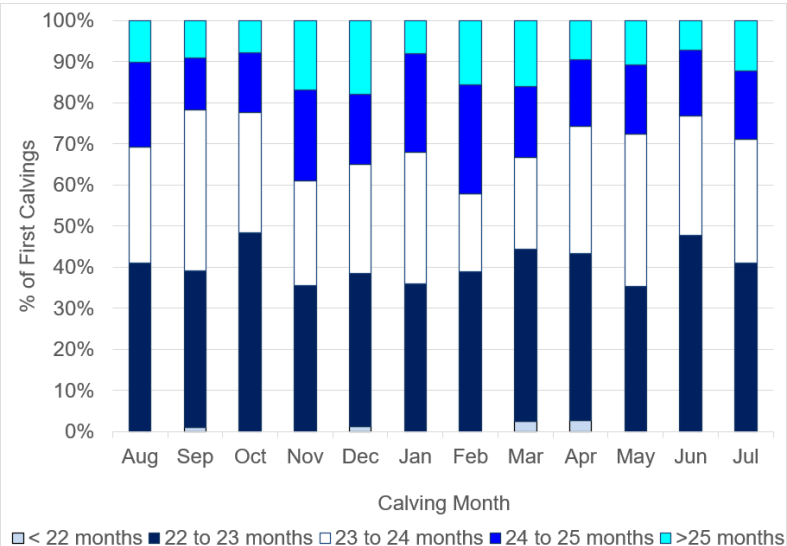
Sample Date
08/05/24

Process Date
08/20/24

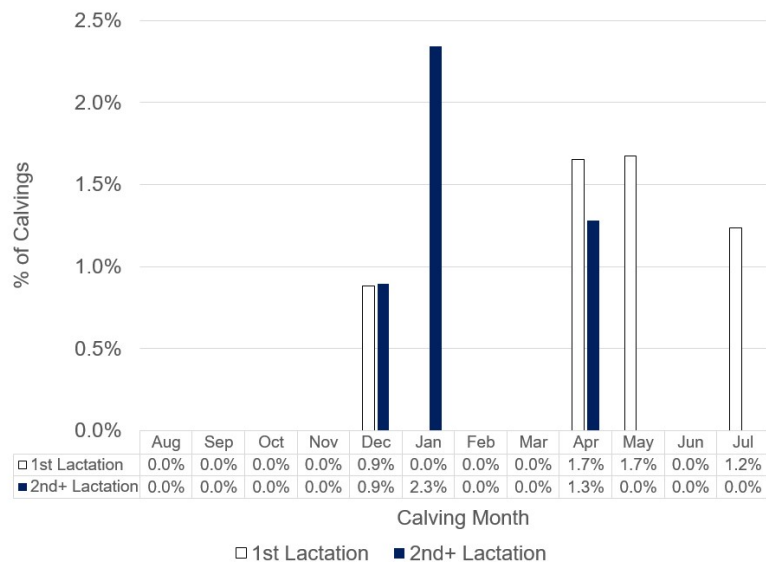
KPI's by Calving Ease Score



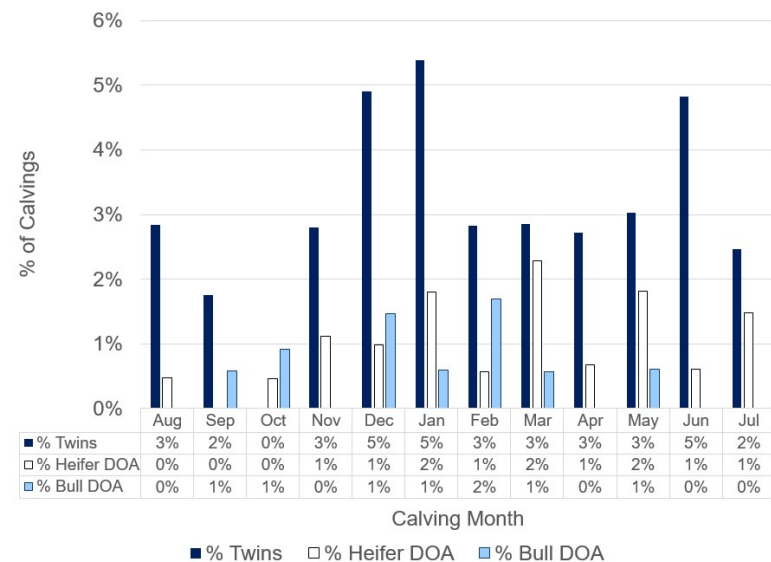
Age at First Calving Distribution by Calving Month



% of Calvings with Calving Ease Score 4 or 5

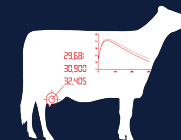


Calving Issues by Calving Month



TRANSITION ANALYTICS

QCS TEST HERD #8



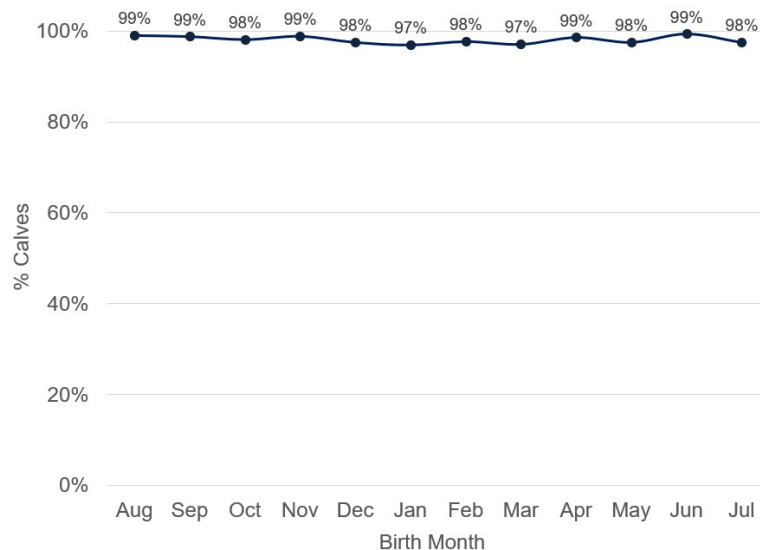
DHI Herdcode
93999941

Test Type & Description
31 DHI-AP

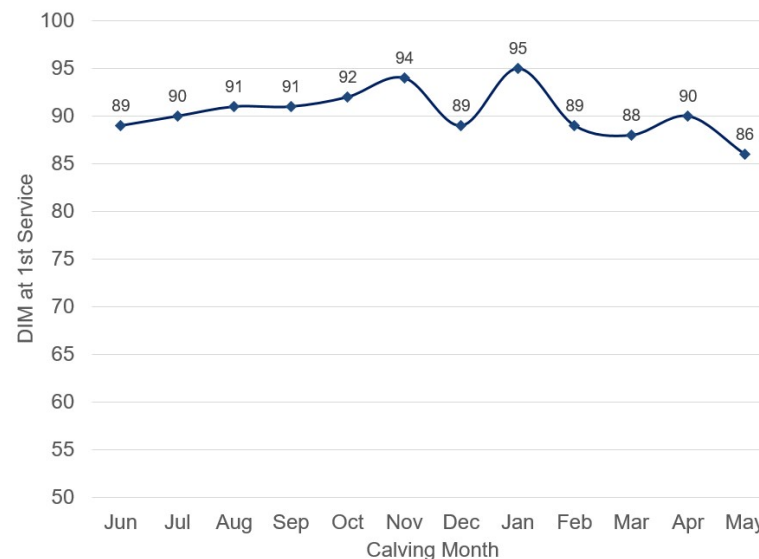
Sample Date
08/05/24

Process Date
08/20/24

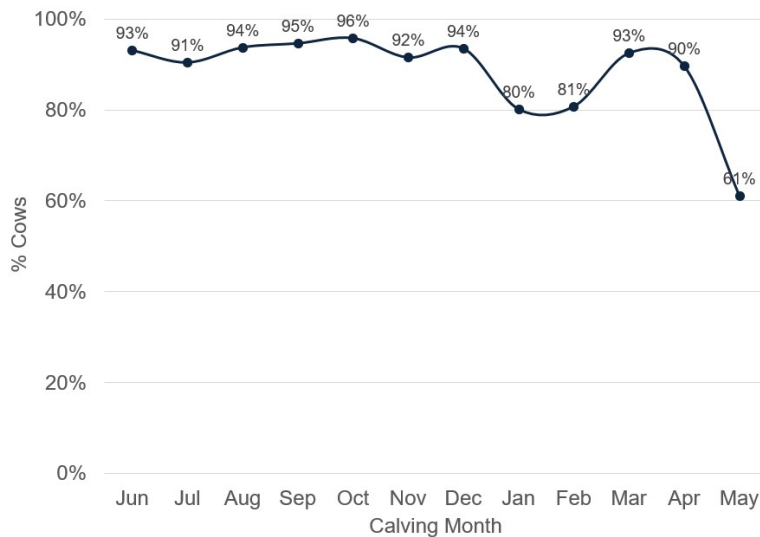
% Calves Born Alive by Month



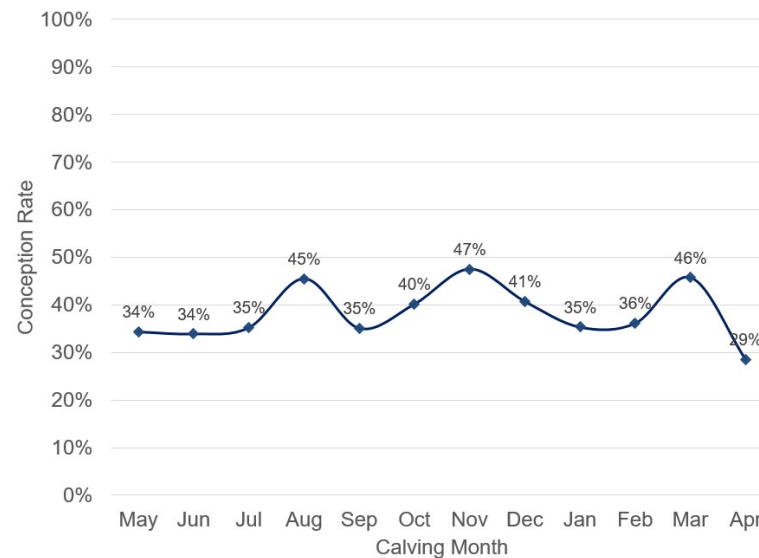
DIM at 1st Service by Calving Month



% Cows Serviced by VWP + 21 day by Calving Month

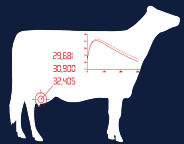


Conception Rate at 1st Service by Calving Month



TRANSITION ANALYTICS

QCS TEST HERD #8



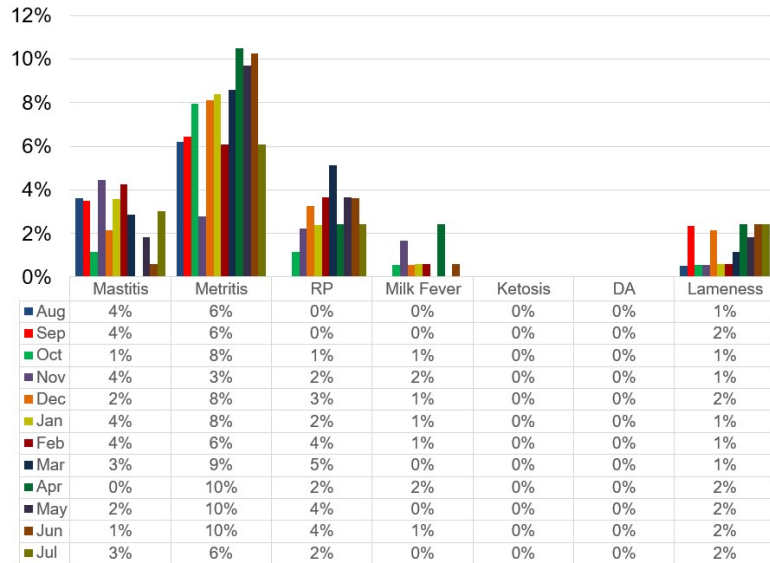
DHI Herdcode
93999941

Test Type & Description
31 DHI-AP

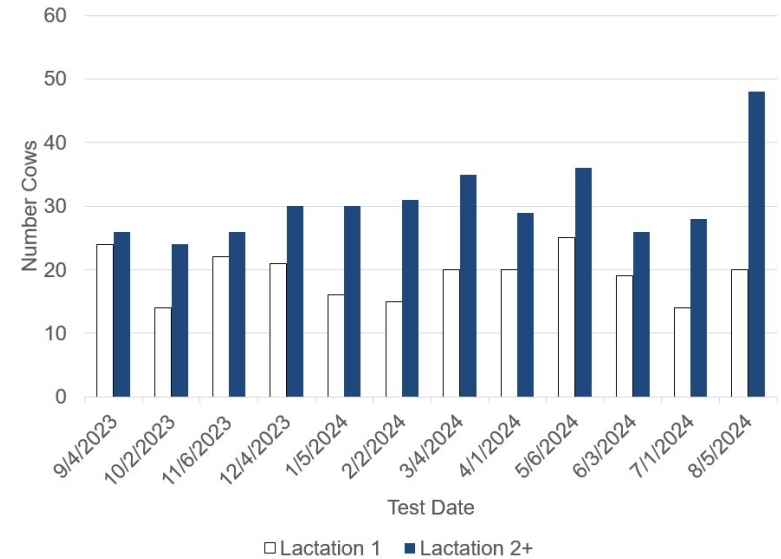
Sample Date
08/05/24

Process Date
08/20/24

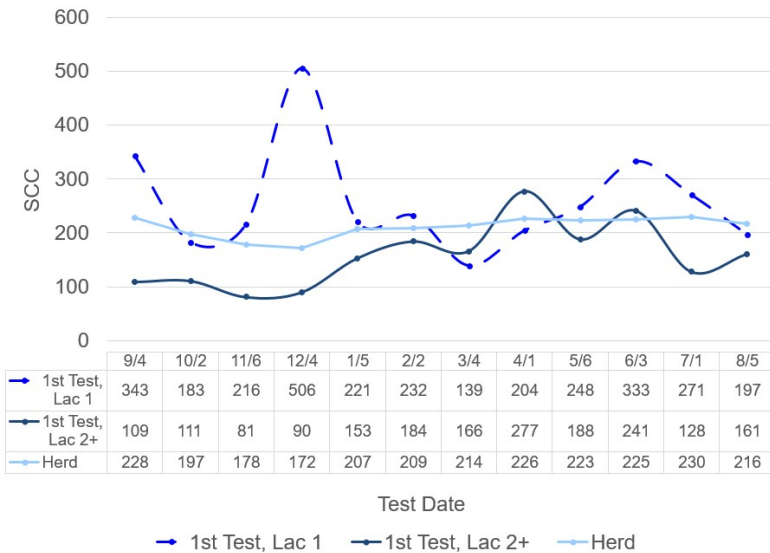
% of Fresh Cows (DIM <30) with Disease by Calving Month



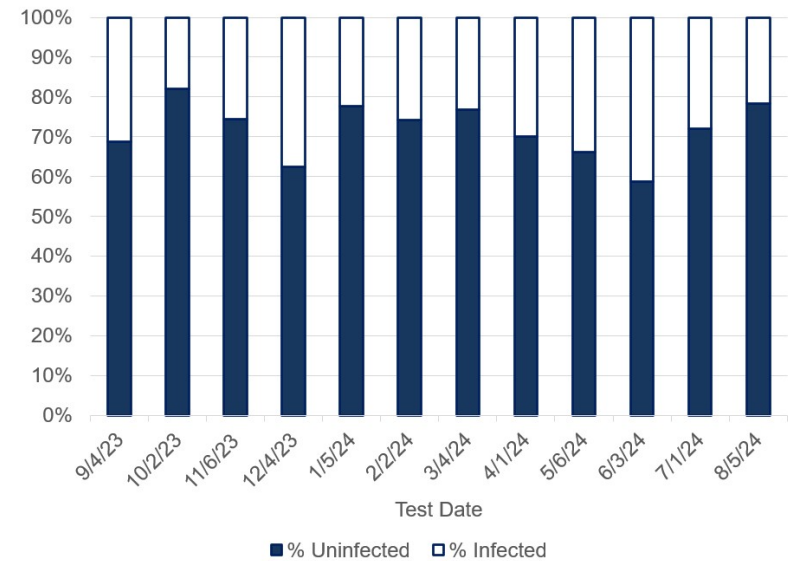
Number Cows with 1st Test SCC by Test Date



1st Test and Herd SCC

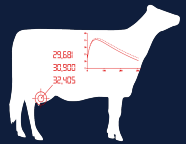


1st Test Infection Status for 1st Lactation Cows by Test Date



TRANSITION ANALYTICS

QCS TEST HERD #8



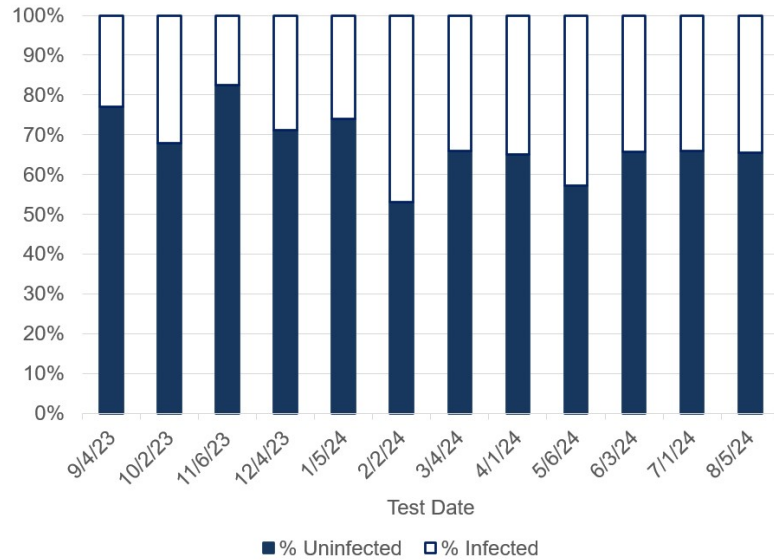
DHI Herdcode
93999941

Test Type & Description
31 DHI-AP

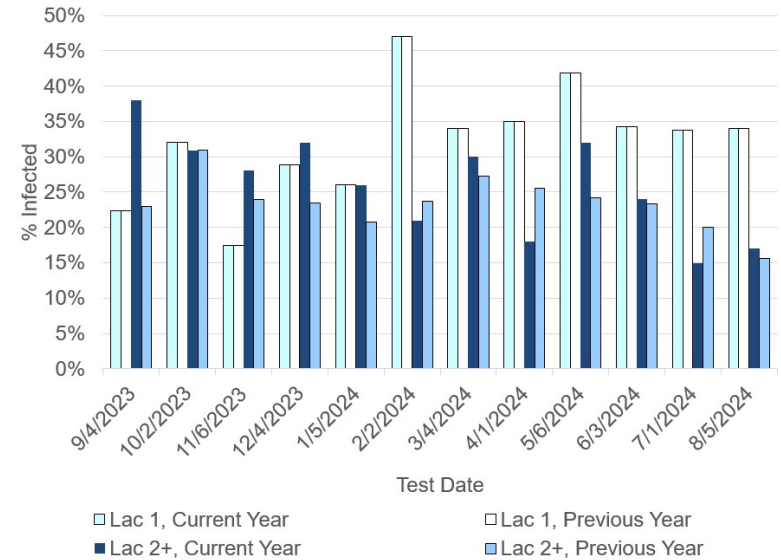
Sample Date
08/05/24

Process Date
08/20/24

1st Test Infection Status for 2nd+ Lactation Cows by Test Date



% Infected at 1st Test Yearly Comparison



Dry Off Infection Comparisons (Dry off to First Test) by Test Date



Not Enough Data to Produce Graph